



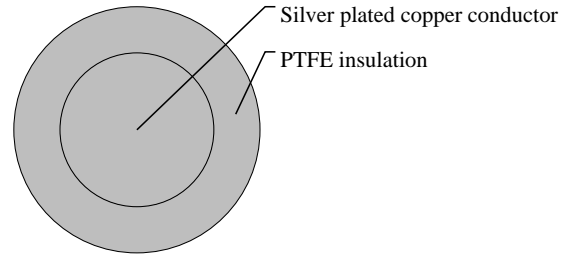
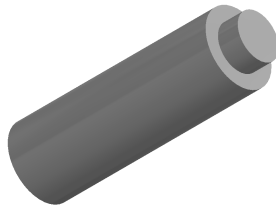
Caledonian

Military Cables

www.caledonian-cables.com

marketing@caledonian-cables.com

MIL-W-16878/6 Type ET Wire 1C24AWG



APPLICATIONS

These PTFE insulated single-core MIL-W-16878/6 (Type ET) wires are used for MIL-Spec, power supply lead wire, appliance wiring and medical electronics. The thin wall PTFE insulation offers high reliability and excellent thermal stability. It resists chemicals, ultra-violet radiation, and mold growth and is nontoxic and safe for the environment. The MIL Spec wire has excellent resistance to thermal aging, solder iron damage, flame, and moisture. PTFE also resists solvents, greases, ozone and most other chemicals. These wires are easy to install due to their small size and slippery surface.

VOLTAGE RATING

250V

CABLE CONSTRUCTION

Conductor: Solid Silver Plated Copper

Insulation: Extruded PTFE

Insulation Wall Thickness: 0.006"

COLOUR CODE

Color Code: MIL-STD-104 (See page 12)

10 basic colors(BLK,BRN,RED,ORN,YEL,GRN,BLU,VIO,GRY,WHT)

PHYSICAL AND THERMAL PROPERTIES

Temperature Range: -60°C to 200°C

DIMENSION AND PARAMETERS

| AWG Size | Conductor Stranding | Conductor Diameter | Conductor Diameter | Approx. Overall Diameter | Approx. Overall Diameter | Approx. Weight |
|----------|---------------------|--------------------|--------------------|--------------------------|--------------------------|----------------|
| | | in | mm | in | mm | LBS/MFT |
| 24 | Solid | 0.02 | 0.5 | 0.032 | 0.8 | 1.9 |